

# PROSPECTUS

SHAPING NEXT NOW

Academic Year 2022-2023



World  
Academy

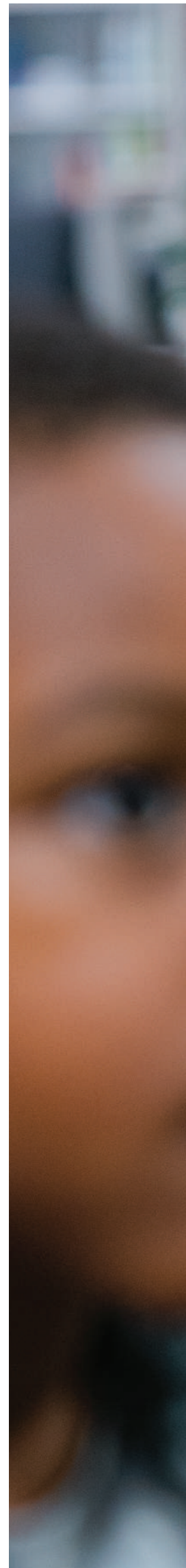






# CONTENTS

A Home for Global Learners	6
Our Vision, Mission & Five Pillars	10
Exciting New Developments	12
About XCL Education	16
Globally Experienced Educators	18
Understanding Every Child	22
Nursery (Ages 2-3)	24
Early Years: Pre-K to KG2 (Ages 3-6)	26
Primary Years: Grades 1 to 5 (Ages 6-11)	28
Secondary Years: Grades 6 to 10 (Ages 11-16)	30
Multiple Pathways for Graduation: Grades 11-12 (Ages 16-19)	32
University & Career Guidance Programme	37
The School of the Future	39
Developing Internationally Minded Learners	41
Sports & Physical Education Programme	43
Arts Programme	45
Visual Arts	46
Music	49
Theatre	51
Language Programme	53
Early & Primary Years Bilingual Programme	55
Home Language Programme	56
Supporting Students in Learning English as an Additional Language	57
Diverse Programme of Extracurricular Activities	60
Parent Engagement	64
Inspiring Learning Environment	66
Sustainability Initiatives	68
Location and Transportation	70
Admissions Process	72









A photograph of two students, a girl and a boy, working together on a robot project. They are in a classroom or lab setting with a large screen in the background displaying a colorful, abstract image. The girl is on the left, wearing a grey jacket, and the boy is on the right, wearing a light blue shirt. They are both focused on their work, with the boy looking down at the robot and the girl looking towards him. The robot is a white and black LEGO Mindstorms Technic robot with a camera and a sensor. The background is blurred, showing a large screen with a colorful, abstract image and some other equipment.

# A Home for Global LEARNERS

Preparing every child for the new tomorrow

**Nursery  
Programme**

(2-3 years old)

**IB Primary Years  
Programme**

(Pre-K to Grade 5)

**IB Middle Years  
Programme**

(Grades 6 to 10)

**IB Diploma  
Programme**

(Grades 11 to 12)





**XCL World Academy (XWA) is a family-oriented international school in Singapore for students aged 2 to 18.**

At XWA, we equip students with the academic and lifelong learning skills to be agents of their own success – helping to prepare them for further education, future careers or navigating the opportunities and challenges they will encounter in their lives.

We place emphasis on the holistic development of every child. Academic growth is as important as character development, and we strive to build qualities like confidence, resilience and leadership in every student. EQ is as much sought after as IQ. And we believe that some of life’s most important lessons can be learned outside textbooks. That’s why we create a vibrant environment through countless opportunities in technology, sports, arts, innovation, community service and extra-curricular activities.

To prepare students for an increasingly global world, we prize diversity and are proud to host students from over 50 nationalities with no one dominant culture or background. Our world-class teachers are trained to identify each student’s special strengths to create personalised pathways that recognise each student’s unique strengths. All this makes XWA a truly international school that prepares students to stay a few steps ahead of the future.



## Welcome message from the Head of School

Choosing a school can be a challenging decision. From experience, personal and professional, I know that every family is unique, and what may be considered important in making the choice of school varies greatly. Personal beliefs and values, class size, curriculum offerings and facilities – the number of considerations can be overwhelming. What is important is that a child flourishes in a school when an informed decision is made to join a community that shares similar aspirations and commitment to individual student development.

XWA is a school offering the continuum of learning through the International Baccalaureate (IB) and other frameworks of learning. Inspired by a unique mission statement focused on lifelong learning, the IB aims to advance students through the attributes of a defined learner profile. The teaching approach is based on fostering inquiring, knowledgeable and caring young people who are motivated to succeed. The IB programme gives students distinct advantages by building their critical thinking skills, nurturing their curiosity and their ability to solve complex problems. Students transition through the stages of personal and academic improvement with consistent, coherent teaching experiences.

Our teachers and staff are focused on each student's intellectual and personal growth. Students are paced through a rigorous curriculum with individualised attention and asked to consider challenging questions through defined learning principles. Students are helped to monitor their progress. Teachers scrutinise attainment of learning, provide feedback and positive reinforcement on achievements.

Students learn across disciplines to cultivate independent skills proven to help them through to higher education. In an increasingly changing and globalised world, students are encouraged to consider both local and global contexts. In so doing, students learn intercultural understanding and, in most cases, the capacity to be multilingual. We are proud of our students and their commitment to their own education and learning. They work, play, and grow in their understanding of the world of possibilities.

We are also proud to celebrate our diversity, innovation and continuous growth. We are fortunate to have a community of caring parents that support our school and their children. This community is multicultural, multinational and multilingual. We are a community of learners who support the pursuit of individual excellence while also exploring ways to enrich the lives and experiences of others.

I hope that you and your family will consider joining this community. We are here to help you through your decision on your child's education.

### Sean P. O'Maonaigh Head of School



## What XCL World Academy families say

*Our children have been attending XWA since we arrived in Singapore in 2017. All four of them have different reasons why they love XWA, and they all hope to continue their entire schooling there. For some, their favourite thing about school is their teachers. For others, it's the theatre productions, the sporting programmes and the endless opportunities for projects in the design lab. Our children have been involved in drama, choir, rugby, track and field, running, soccer, rock climbing, aeronautics, school camps, international sporting competitions, and both French and Mandarin second language development programmes. We know that the experiences and the friendships that our family has gained through XWA will last a lifetime. We're happy to recommend it to other families as we know that the school and its community are a large part of our children's experiences in Singapore.*

**Lotus Mackie, Australian (April, 2021)**

*There are many things we like about the school, but some that we particularly appreciate are the diversity of the community, the range of competitive sports and the after school activities. It's also not a big school and has a very international community. The open-door policy of the Principal and the faculty to connect with parents and incorporate their suggestions, together with facilities like the design centre, VR and robotics labs, convinced us that the school was a great choice. We highly recommend the school to any family looking for a multicultural, highly academic and, at the same time, stress-free environment. It has an open philosophy on how to educate great little people, offering spectacular facilities, a rich multicultural community and a strong IB focus.*

**Meri Rosich & Sergio Salvatore, Spanish (June, 2020)**

*We were specifically looking for a truly international school with a wide cultural representation and preferably with no dominant nationality. In addition, we wanted a mid-size school that offered a warm and caring school community in which our boys would receive a strong academic education but also thrive in their personal and social development. During our visit, it was obvious that this school was the best fit for our children. They enjoy having friends from various parts of the world and really like the facilities of the school – the library, Olympic-sized swimming pool, Design Centre and their playground.*

**Patricia Mathias, Canadian (July, 2021)**



Our  
**VISION**  
and Mission

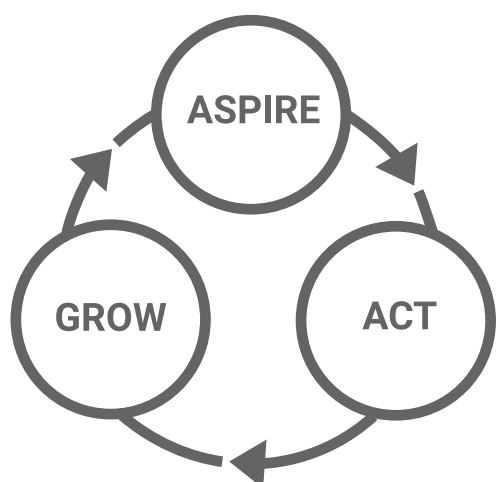
— Shaping Next Now —





We believe that an effective education should prepare students to shape tomorrow and not merely be part of it. Our School represents XCL Education's commitment in Asia to educating students in this way.

## Our vision



## Our mission

To empower an inclusive international community of happy learners who aspire to positively impact others.

## Five pillars

At XWA, the five pillars provide the basis for everything we do:

- Diversity and community;
- Well-being and personalisation;
- Quality and academic excellence;
- Innovation and "Shaping Next Now";
- Leadership and sustainability.

Using these pillars as guides, we create pathways for our students to develop academically and personally. These explorations help students better understand who they are and prepare for the ever-changing globalised world.





Exciting New

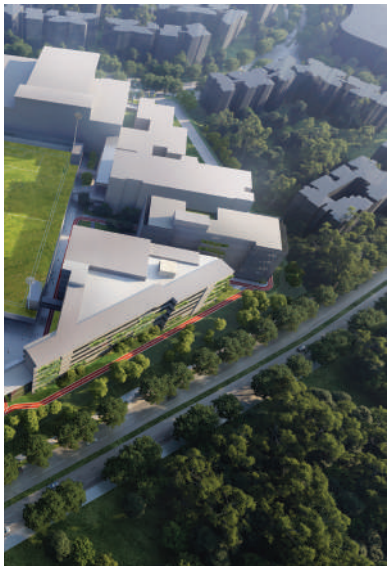
# DEVELOPMENTS













XWA is excited to announce the launch of the Innovation Hub. The Innovation Hub is a state-of-the-art multi-level building purpose-designed to enhance the learning environment with the latest in technology and specialised labs for our students.

Designed to be environmentally friendly and with sustainability at the forefront of design, the Innovation Hub will include clean air filtration in all learning spaces and be home to a digital multimedia lab, a top floor student lounge, specialist labs, fabrication and design thinking labs, and a multi-use eSports arena, the first of its kind in an international school.

The focal point will be a Central Square allowing learning to continue outside the classroom and facilitating interaction and community building. Several New sporting facilities are also under development, including tennis courts, cricket/baseball practice batting nets, and a 550-metre athletics track.



About



Shape your future, find your path

Did you know?



**21,000**

STUDENTS ACROSS  
SOUTHEAST ASIA



**16,000**

STUDENTS IN  
K-12 SCHOOLS



**2,000**

TEACHERS IN  
K-12 SCHOOLS



**18**

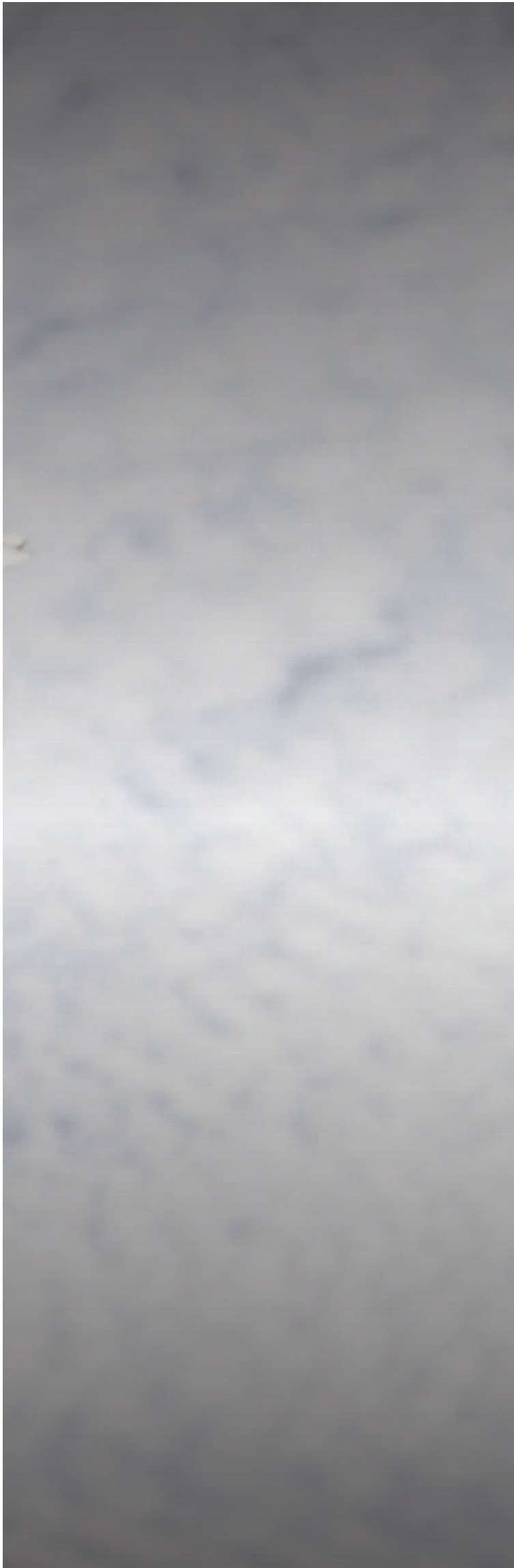
K-12 SCHOOL  
CAMPUSES



**36**

AVERAGE GROUP  
IB SCORES





**XWA is a member of the XCL Education group of schools, a forward-thinking group of private and international schools, kindergartens, and academic enrichment programmes, serving over 21,000 students across Southeast Asia.**

It is the ethos of XCL to produce the best outcomes for our students, not just with excellent, world-class academics and extra-curricular activities but also with the tools, mindset, and exposure they need to confidently navigate the uncertain future, find their own place and leave their own mark in the world.

XCL Education strives to prepare students:

- For more rapid economic and social change than ever before;
  - For jobs that have not yet been created;
  - To use technologies that have not yet been invented;
  - To solve social, economic and environmental problems that we do not yet know will arise.

To prepare students for this future, XCL Education believes in taking an approach that develops academic abilities alongside critical 'human' skills such as critical thinking, creativity, leadership, empathy, teamwork, grit, adaptivity, self-motivation and digital proficiency.

XCL Education equips students with the academic and lifelong learning skills to be agents of their own success – helping them find their path and shape their future whether in further education, careers or navigating the opportunities and challenges they will encounter in their lives.

To learn more about XCL Education and the values that are being followed by all group members, please visit their website <https://xcledu.com/>.

# Globally EXPERIENCED Educators

Great teachers inspire great students

**Our commitment to diversity doesn't stop at the nationality of our students. Our world-class faculty comes from over 20 countries and has literally been carefully selected from all around the world.**

Their experience and expertise teach students life-long skills and attitudes to help them succeed beyond term papers and standardised tests. It helps bring out the best in every child.

*Each of our children has grown and developed diverse talents through the guidance of the dedicated teaching staff. We were especially impressed by the holistic approach the school takes to education – it maintains an exceptional IB programme and a great balance between the academic, emotional and social experience of school life. The professional teachers and staff make attending school an experience that my children look forward to.*

Lotus Mackie, Australian (April, 2021)

*XWA has helped me to thrive and develop as a student and as a person. I have grown as an individual and a member of the global community while being supported by incredible teachers and mentors. Our community is very unique as it is truly international. I have been exposed to an entire world of cultures filled with students who pursue excellence, grow by learning and lead through innovation. The school ensures that every student has the opportunity to find their passion and inspires them to shine.*

Angali Grillo, Grade 11 student (December, 2021)

*The school has fuelled my ambitions and aspirations. I have been surrounded by many experienced faculty members and an incredible Drama department. I was able to truly immerse myself in what I love to do.*

Avaana Harvey, Class of 2021 (July, 2021)





### Did you know?



OVER 20  
NATIONALITIES



ONGOING  
PROFESSIONAL  
DEVELOPMENT  
PROGRAMME



HIGHLY  
EXPERIENCED  
AND TRAINED IB  
EDUCATORS



AVERAGE OF 10  
YEARS OF TEACHING  
EXPERIENCE



53% OF OUR  
TEACHERS HOLD A  
MASTER DEGREE

*XWA community is very powerful and welcoming to every new student. It doesn't matter where you are coming from, your nationality or grades; the community is very warm, making you feel at home.*

Giacomo Pivetti, Class of 2021 (July, 2021)

*The whole school is filled with amazing teachers. Picking one favourite teacher is an impossible task.*

Elizabeth Chernyak, Class of 2021 (July, 2021)

*XWA has been a very invigorating place to learn. The culture of the school is close-knit, and you always feel that you are a part of this community. Teachers are very supportive and attentive to students' needs, creating a collaborative environment for students and teachers.*

Alicia Soosai, Class of 2021 (July, 2021)

*We are extremely happy with not only the diversity of the student body, but also with the diversity of the staff and teaching experience of the Education Leadership Team and teaching staff. We are also grateful to be part of a school that truly supports students to be the best version of themselves.*

Patricia Mathias, Canadian (July, 2021)

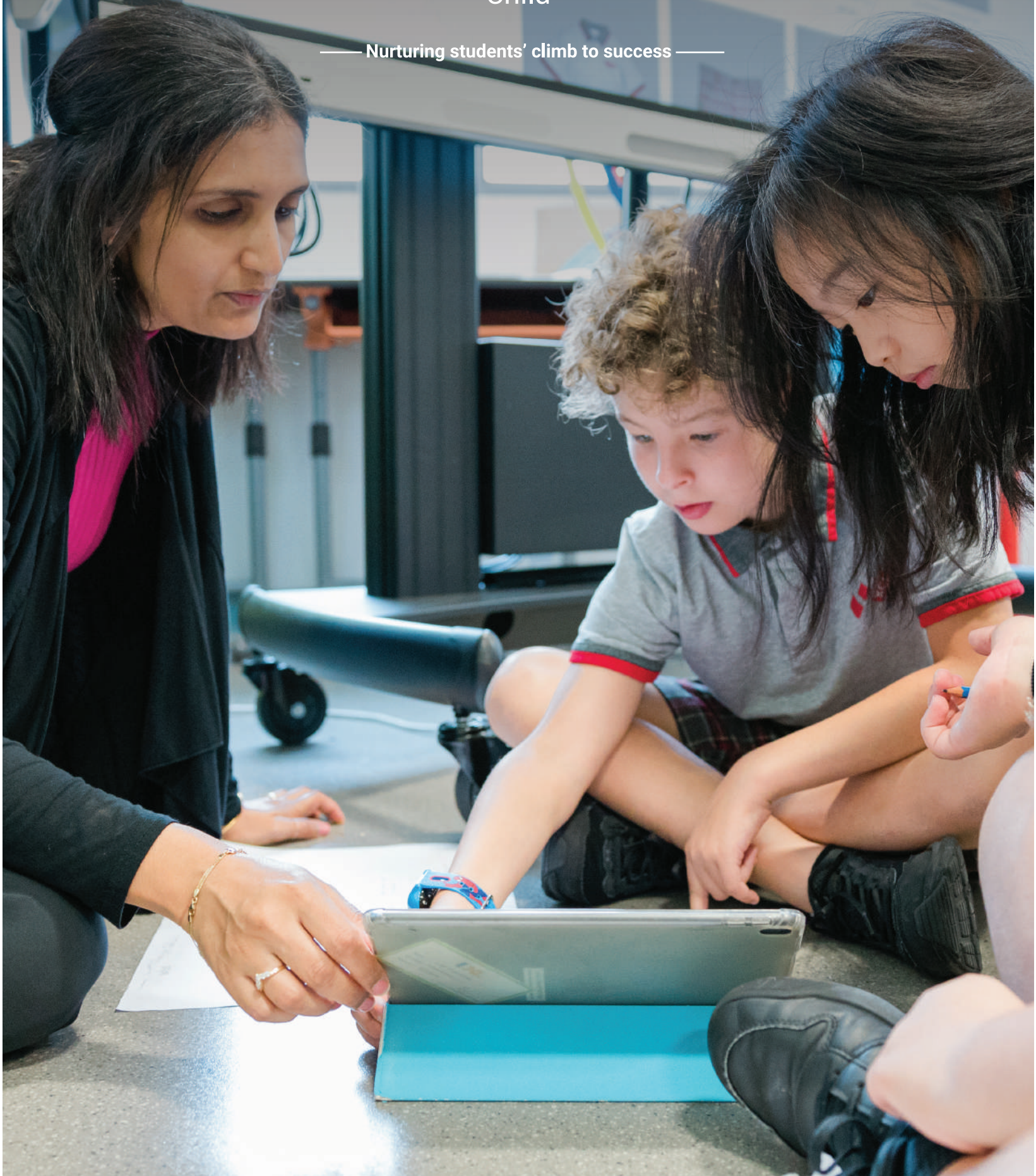






Understanding  
**EVERY**  
Child

—— Nurturing students' climb to success ——





XWA is a culturally rich school in which children come from many different parts of the world. Many of those children have had extremely diverse educational experiences in other countries. As a school, it is vital that we know every student in terms of their social, emotional and academic development.

We use a range of standardised assessments including CAT4, PASS, MAP, and WIDA to pinpoint students' strengths and areas for improvement in academics as well as social and emotional areas so that their education can be tailored for greater levels of personalised learning.

## An individualised approach that enables every child to be their best

We believe that an optimal student-teacher ratio can make a substantial impact on your child's education. Providing an engaging, developmentally appropriate and safe learning environment that supports each child's natural curiosity is integral to everything we do at the school.

This is defined by our Learning Principles:



THE WELL-BEING OF THE LEARNER SHOULD BE PRIORITISED FOR LEARNING TO HAPPEN



THE BELIEFS AND PERCEPTIONS ABOUT INTELLIGENCE AND ABILITY AFFECT LEARNING



LEARNING IS VISIBLE TO STUDENTS AND TEACHERS WHEN THE PROCESS, GOALS AND OUTCOMES ARE MADE EXPLICIT



ASSESSMENT FOR LEARNING IS KEY TO SUPPORTING LEARNING



LEARNING IS A PERSONAL JOURNEY



LANGUAGE IS ESSENTIAL FOR LEARNING COMMUNICATION AND COLLABORATION



OUR UNDERSTANDING OF WHAT IS RELEVANT TO LEARN, AND WHAT IT MEANS TO LEARN, IS EVOLVING

We recognise and value that your child's emotional and social well-being is shaped from a very early age. Our main aim is to provide a happy, calm, secure, and stimulating environment where students can develop at their own pace under the guidance of our highly qualified teachers. We encourage curiosity, foster a culture of kindness and instil the love of learning.

We create this safe space in our Nursery classes by limiting class sizes to a maximum of 14 children in the Nursery, 16 children in the Early Years, and 24 children in the Primary and Secondary Years<sup>1</sup>. This allows the full-time teacher and teaching partner in your child's class to get to know your child and tailor activities to their individual needs specially designed to develop confidence and bring out the best in them.

As our learners progress through Primary School, more emphasis will be placed on developing their independence and organisational skills. With this in mind, students in Grades 4-5 will mainly work with their homeroom and specialist teachers, supported by a team of teaching partners who work across the grade level.

This kind of learning environment helps to encourage engagement in class, allows students to learn more and at a faster pace, builds strong teacher-student relationships and leads to higher performance.

<sup>1</sup> All classes are staffed to ensure an optimal learning environment. The number of students per class may fluctuate during the academic year in line with demand for a particular grade level during the peak enrolment or withdrawal period.



# NURSERY

(Ages 2-3)

— A world of discovery through play-based learning —

Our Nursery Programme offers a caring, nurturing, engaging, inquiry-led and play-based experience that will provide your child with opportunities to develop their thinking, social, communication and motor skills.

Did you know?

ENROL FROM  
ONLY

2

years old

DAILY  
Mandarin  
classes

LOW STUDENT  
TO TEACHER

7:1

RATIO

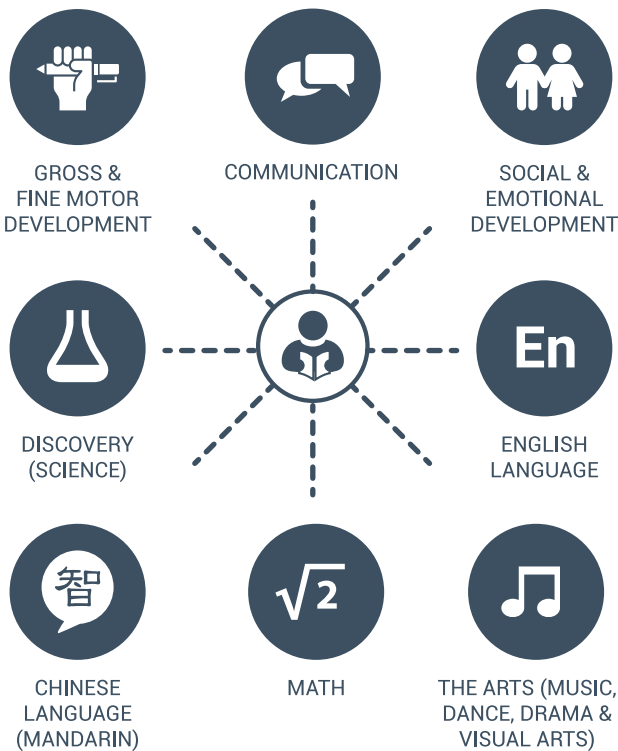
# A world of discovery through play-based learning

At XWA, we believe that the key to education for our youngest students is to provide them with a safe and nurturing environment where they feel comfortable to explore and learn confidently.

Our Nursery programme for children aged 2-3 years old offers creative, engaging and age-appropriate play-based activities in a specially designed inspiring learning space. The programme is designed to spark children's imagination, creativity and curiosity while building their confidence and self-management skills.

## A typical day

A typical day at the Nursery is filled with engaging, hands-on, experiential learning activities. Children are active participants in their own learning, and they are inspired to experiment and engage through play-based activities:



Students have a dedicated entrance to access the Nursery learning area. All of our children eat together, enjoying morning snacks, lunch and afternoon snack times in a socially engaging environment.

# Play-based learning

Play is one of the most important ways in which young children gain essential knowledge and skills. For example, thinking skills are developed when they engage with puzzles. Social skills are cultivated through learning to care and share. Research skills are nurtured through simple observation and planning. And essential communication skills are learned through listening and speaking. We ensure that your child benefits from varied and well-directed early learning opportunities through participation in play-based activities. These fun-filled experiences are conducted in new and vibrant environments, both indoors and outdoors.

## Personalised care and attention

Our small class sizes with an inspiring and highly qualified teaching faculty ensure our students get the best possible care at this vital stage of their learning journey.

We believe that a low student-teacher ratio can have a substantial impact on your child's education. This is why we've created a safe space in all our classes by limiting class sizes to no more than 14 children in the Nursery. All classes are facilitated by a full-time teacher and a fully qualified teaching partner. This allows the teachers to get to know every child, tailor activities to the individual needs and encourage greater class participation. All these allow your child to feel at home and bring out the best in every child.

## Parent partnerships

We value the importance of establishing a solid partnership between home and school. Our learning journey with your child is a trilateral relationship made up of the child, parent and teacher. Excellent communication between teachers and parents is vital in the care and education of our students. There will also be a range of opportunities for parent involvement, from reading to art and cooking with your child.

## School-to-home communications

In the Nursery, we use a digital portfolio to communicate with families. It provides a simple way for teachers to share what your child is working on in the classroom and provide regular updates and notifications. Parents can also communicate directly with the class teacher using our online platform.

Parents are welcome to speak directly to class teachers face-to-face or via email and phone.



# EARLY YEARS

Pre K to KG2 (Ages 3-6)

Creating a solid foundation for future learning

Did you know?

LOW



STUDENT TO  
TEACHER RATIO

DAILY



MANDARIN  
CLASSES

BILINGUAL  
PROGRAMME OPTION



ENGLISH-CHINESE  
(MANDARIN)

WEEKLY



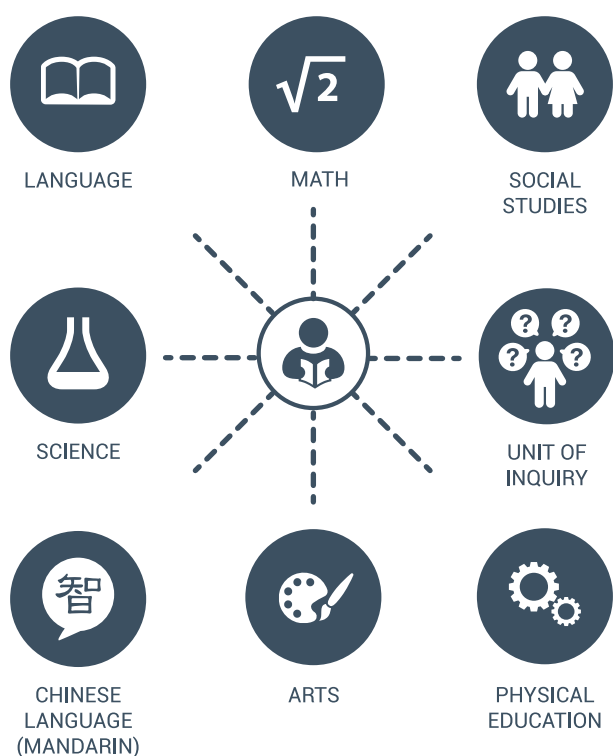
SWIMMING  
CLASSES

Our Early Years Programme for children aged 3-6 years is designed to encourage students to be curious, creative, collaborative, kind and considerate. Students learn by connecting prior and new knowledge in meaningful ways in a stimulating and safe learning environment whilst building foundational literacy skills.

The learning experience that your child will have with us is driven by the pedagogy, beliefs and values of the International Baccalaureate Primary Years Programme (IB PYP), which is a leading curriculum framework for international primary education.

## Personalised attention and learning

We recognise and value that your child's emotional and social well-being is shaped from a very early age. Our main aim is to provide a happy, calm, secure, and stimulating environment in which children can develop at their own pace under the guidance of our highly qualified teachers. We encourage curiosity, foster a culture of kindness and instil the love of learning.



We create this safe space in our Kindergarten classes (Pre-K-KG2) by limiting class sizes to a maximum of 16 children. This allows the full-time teacher and teaching partner in the class to get to know your child, tailor activities to their individual needs specially designed to develop confidence and bring out the best in them.

## Purposeful play

The Early Years programme focuses on purposeful play, active learning, creativity, and critical thinking. We encourage children to actively explore the world, developing individual and shared inquiries.

Our goal is to create a dynamic and joyful community of young learners who have the strong educational foundations they need to continue their journey through to Primary School.

## Inquiry-based learning

Our learners are engaged in a stimulating, inquiry-based curriculum. We create learning experiences that are meaningful, inclusive and multi-sensory, to raise your child's natural curiosity and interests through several engaging Units of Inquiry (UOI). Inquiry is the process initiated by the learner or the teacher which moves the learner from their current level of understanding to a new and deeper level of understanding.

With the UOI at its core, Language, Math, Social Studies, and Science standards are addressed in authentic and meaningful contexts. The programme is further extended through Mandarin, Physical Education, and Arts (Visual Arts, Music and Dance) to provide young children with meaningful learning experiences and holistic development.

## Stimulating and safe learning environment

The Early Years building is equipped with facilities and resources that were designed with younger children in mind. Our educational spaces are created to provide students with a vibrant and engaging learning environment in which they can flourish. We also encourage our younger students to experience 'big school' when they are comfortable. This can be done through walk-arounds and by participating in whole-school community activities.

## School-to-home communications

In the Early Years, we use a digital portfolio to communicate with families. It provides a simple way for teachers to share what your child is working on in the classroom and provide regular updates and notifications. Parents can also communicate directly with the class teacher using this tool. Parents are welcome to speak directly to class teachers face-to-face or via email and phone.



# PRIMARY YEARS

Grades 1 to 5 (Ages 6-11)

Developing the whole child as an inquirer

Did you know?

OPPORTUNITY TO LEARN  
A SECOND LANGUAGE



FRENCH, SPANISH  
OR MANDARIN

EAL SUPPORT



FOR STUDENTS WHOSE  
FIRST LANGUAGE IS  
NOT ENGLISH

BILINGUAL  
PROGRAMME OPTION



ENGLISH - CHINESE  
(MANDARIN)

BALANCED  
CURRICULUM



(ACADEMICS, ARTS,  
SPORTS)

Our Primary Years Programme for students aged 6-11 creates a stimulating and challenging environment that nurtures a child's natural curiosity, creativity, and ability to reflect and helps them to develop a lifelong love of learning.

Our curriculum brings together the best practices from educational systems from around the world under the framework of the International Baccalaureate Primary Years Programme (IB PYP). We focus on the ideals of international understanding and responsible global citizenship. The PYP helps students establish personal values as a foundation upon which international-mindedness will develop and flourish.

## Personalised attention

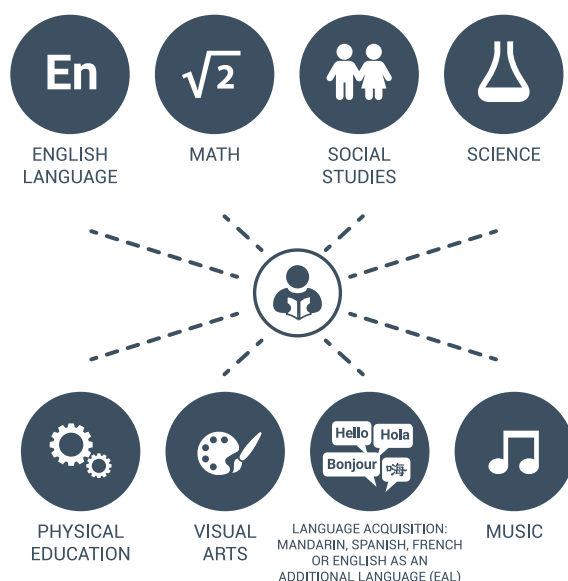
Primary students spend most of the school day with their homeroom teacher. A fully qualified teaching partner supports each teacher from Nursery to Grade 3 to ensure personalised attention for each student. Students also have single subject teachers for visual arts, music, physical education and language acquisition. Teaching instruction caters to each student's needs, abilities and learning styles, resulting in a community of happy, confident and engaged learners.

As our learners progress through Primary School, more emphasis will be placed on developing their independence and organisational skills. With this in mind, students in Grades 4-5 will mainly work with their homeroom and specialist teachers, supported by a team of teaching partners who work across the grade levels.

## Inquiry-based learning

An inquiry-based approach to teaching and learning builds on your child's innate curiosity, individual knowledge and interests. Inquiry can mean exploring, wondering, experimenting, collecting data and reporting findings, taking and defending a position, and solving problems in various ways.

## Primary Years core studies include:



## Transdisciplinary learning

At XWA, subject areas are not taught in isolation but are integrated to create learning experiences that mirror the real world. When studying local and global issues, we reinforce the connections between respective subjects, creating a more effective and meaningful learning experience. As a result, students gain a deeper, more complete understanding. As an IB school, the PYP is used as a curriculum framework, further underpinned by the American Education Reaches Out (AERO) standards, which provide benchmarks for key age-related learning objectives and ensure clarity in the progression of learning outcomes.

## Cross-grade collaboration

Collaboration and community are integral elements of everything we do across all grades at the school. XWA teachers regularly provide cross-grade collaboration opportunities to enhance students' learning experiences. This type of activity strengthens cross-grade friendships through shared experiences and engages students' shared emotional connection to the Unit of Inquiry, making it personal and memorable on an individual and community level.

## Communications and reporting

We encourage parents to be involved in their child's school experience. We encourage face-to-face communication. In addition, parents have access to a personalised student digital online portfolio that provides engaging insights into what their child is learning.

## Typical school day

The school day runs from 8:30 am to 3:30 pm. Many students from KG2 through Grade 5 participate in our extensive extra-curricular activities programme, which runs from 3:35 pm to 4:45 pm.

## Concept-based teaching and learning

Concept-based instruction is driven by "big ideas" rather than subject-specific content. When your child is exposed to concept-driven learning, they take in knowledge and learn how to apply that knowledge to real-life situations. Students become critical thinkers, which is essential to their ability to creatively solve problems in the 21st century.

## Interested to find out more?

Scan this QR code to find answers to frequently asked questions about the IB PYP.





# SECONDARY YEARS

Grades 6 to 10 (Ages 11-16)

Forming students into creative, critical and reflective thinkers

Secondary years are a special time in your child's development. This is a period of tremendous intellectual, physical and emotional growth. That's why our curriculum is designed to be broad and balanced to widen students' knowledge, understanding and experiences. It promotes academic rigour, develops intellectual curiosity and fosters the ability to learn independently. It also ensures that academic excellence flourishes alongside arts, music and sport.

In the first five years of Secondary School (Grades 6-10), students follow the IB Middle Years Programme (MYP). The MYP is designed to build upon the knowledge, skills and attitudes developed in the IB Primary Years Programme (PYP) and also to prepare students to meet the academic challenges of the IB Diploma Programme (DP).

The MYP Programme promotes interdisciplinary study that helps students make meaningful connections between academic subjects. Integrated teaching and learning helps students analyse complex issues and develop the mental habits they need to participate in our increasingly interconnected world.

## Holistic learning

Our curriculum aims to provide holistic education and show each individual's impact on the world around them. Its goal is to constantly place learning within a context and make explicit the relationship between various disciplines.

Our curriculum is designed to help our students ask challenging questions, learn 'how to learn', establish their own identity and develop a global perspective.

## Concept and content-driven curriculum

Concepts are big ideas that have relevance within specific disciplines and across subject areas. MYP students use concepts as a vehicle to inquire into issues and ideas of personal, local and global significance and examine knowledge holistically for reflection in the relevant context.

Through a rigorous MYP curriculum, XWA aims to provide a varied programme of experiences and a firm academic grounding in Language and Literature (English and Japanese<sup>2</sup>), Individuals and Societies, Science, Mathematics, Language Acquisition (French, Mandarin, Spanish or EAL), Physical and Health Education, Design, and the Arts.

Consistently driving learning through inquiry, the school prepares students to become creative problem-solvers and lifelong independent thinkers, equipped to succeed in a rapidly changing and increasingly global society.

## Personal Project

The Personal Project is a compulsory project completed in the final year of the MYP. It is an opportunity to explore a topic of interest for each student, develop Approaches to Learning (ATL) skills further and create something unique.

## Continuous assessment

The IB provides a rigorous framework for assessment, and student work is evaluated according to criteria that clearly reflect the holistic philosophy of the programme. Self and peer assessment are integral parts of the process.

Grade 10 students undertake a series of future-focused, externally moderated exams and portfolio submissions: the MYP eAssessment. These exams challenge students to use their knowledge and skills to solve problems. The eAssessment presents students with videos, sound recordings, interactive graphs and simulations based on real-life issues and scenarios. Students respond to the questions using sophisticated analysis, evaluation and explanatory skills. Students who successfully complete all subject exams and portfolio submissions can earn an IB validated MYP Certificate.

## Interested to find out more?

Scan this QR code to find answers to frequently asked questions about the IB MYP.



## University & Career Guidance

XWA offers a bespoke University & Career Guidance Programme to students from Grade 8 and above.

This will encourage our students to start thinking about their future sooner and give them specialist support to map out their preferred educational and career pathways.

Two full-time Counsellors are on hand to help guide your child, supporting them in finding their path.





# Multiple Pathways for **GRADUATION**

Grades 11 and 12 (Ages 16-19)

————— Preparing your child for success beyond school —————

The final two years of Secondary Years are an exciting time for students as they prepare for the next stage of their educational journey. We recognise that every student is unique, and their aspirations are also different. With that in mind, we offer a variety of graduation pathways.



We offer an academically challenging and balanced programme of secondary years education. We encourage our students to develop informed opinions and form independent minds while also equipping them with the knowledge and skills they need to realise their aspirations. The choice of a graduation pathway should reflect your child's aptitudes, ambitions and interests.

## **IB Diploma Programme**

### **The global gold standard for high school graduates**

The IB Diploma Programme (DP) is an academically challenging 2-year pre-university curriculum. It is a highly regarded qualification with final external examinations aimed at preparing students aged 16 to 19 for success at university and life beyond university. The programme has gained recognition and respect from the world's leading universities.

The DP combines breadth in Standard Level subjects with depth in academically rigorous Higher Level subjects, and each subject combination can be tailor-made for the individual student.

Students develop expert subject knowledge and the ability to undertake independent research, write essays, argue their positions, and give confident presentations.





## DP subject groups

DP students select courses<sup>9</sup> from the following subject groups to fulfil DP requirements and XWA graduation requirements. DP students must choose one course from each of the five subject groups (Group 1-5) delivering a breadth of knowledge and understanding in their best language, additional language(s), individuals and societies, the sciences and mathematics. Students must also choose either an art course from the arts group (Group 6) or a second course from one of the other subject groups.

### Group 1 – Language A

Language & Literature (SL/HL)

Literature Self taught (SL/HL)<sup>2</sup>

Chinese Language & Literature (SL/HL)

Japanese Language & Literature (SL/HL)

### Group 2 – Language Acquisition

Mandarin Ab Initio (SL)

Spanish Ab Initio (SL)

French Ab Initio (SL)

Spanish B (SL/HL)

Chinese B (SL/HL)

English B (SL/HL)

### Group 3 – Individuals & Societies

Economics (SL/HL)

Business Management (SL/HL)

Psychology (SL/HL)

### Group 4 – Sciences

Biology (SL/HL)

Chemistry (SL/HL)

Physics (SL/HL)

Design Technology (SL/HL)

### Group 5 – Mathematics

Mathematics: Analysis &  
Approaches (SL/HL)

Mathematics: Applications &  
Interpretation (SL)

### Group 6 – The Arts

Visual Arts (SL/HL)

Theatre (SL/HL)

Music (SL/HL)

Note: Higher Level (courses require 240 teaching hours) and Standard Level (courses require 150 teaching hours).

## DP Core

Through the DP Core, students reflect on the nature of knowledge, complete independent research and undertake a project that often involves community service. The DP core elements are Theory of Knowledge, Extended Essay and Creativity, Activity and Service. These are compulsory if the student is aiming to receive the full IB Diploma.

### Theory of Knowledge

The Theory of Knowledge (TOK) course invites students to reflect on their learning experience by considering ways of knowing and how we use them in the different areas of knowledge so that they can address fundamental questions about themselves as knowers. The central question of the TOK is 'how do we know what we know?'. The TOK course looks at how we acquire knowledge and the knowledge problems involved in the DP subject areas and areas such as ethics, law, politics, religion, media, and different cultural backgrounds. This course is assessed through an oral presentation and a 1,600-word essay on one of the six prescribed titles for the examination session. Full IB Diploma students are required to have at least 100 hours of TOK course time by the end of Grade 12.

### Extended Essay

The Extended Essay (EE) is an in-depth study of a focused topic of the student's choice. This usually is one of the student's six chosen subjects for those taking the full IB Diploma or a subject that a diploma course student has a background in. It is intended to promote academic research and writing skills, providing students with an opportunity to engage in personal research in a topic of their own choice, under the guidance of a supervisor (an appropriately qualified member of staff within the school). The EE is presented as a formal piece of sustained academic writing containing no more than 4,000 words, accompanied by a reflection form of no more than 500 words. It is the result of approximately 40 hours of work by the student.

### Creativity, Activity & Service

To be awarded the IB Diploma, students are required to complete a substantial commitment to each of the three Creativity, Activity & Service (CAS) components. CAS is at the heart of the DP, involving students in a range of activities alongside their academic studies. Students are engaged in a variety of activities beyond the academic classroom and are encouraged to develop their own projects:

**Creativity** - exploring and extending ideas leading to an original or interpretive product or performance. This may include visual and performing arts, digital design, writing, film, culinary arts and crafts.

**Activity** - physical exertion contributing to a healthy lifestyle.

Pursuits may include individual and team sports, dance, outdoor recreation, fitness training, and any other form of physical exertion that purposefully contributes to a healthy lifestyle.

**Service** - community and social service activities.

The CAS programme formally begins at the start of the DP. It continues regularly (ideally every week) for at least 18 months with a reasonable balance between creativity, activity and service.

## IB Diploma requirements

Students take written examinations at the end of the programme, which are marked by external IB examiners. Students also complete assessment tasks in the school which are either initially marked by teachers and then moderated by external moderators or sent directly to external examiners.

The marks awarded for each course range from 1 (lowest) to 7 (highest). Students can also be awarded up to three additional points for their combined TOK and EE results.

The student will be awarded a diploma if they gain at least 24 points, subject to certain minimum levels of performance, including successful completion of the three essential elements of the DP core.

To attain the IB Diploma, a candidate must fulfil several requirements, including:

- Gain at least 24 points in total;
- A grade A-D in TOK and the EE;
- 12 points or more on HL subjects;
- 9 points or more on SL subjects;
- CAS requirements have been met.

All students who meet the graduation requirements will also receive the XWA High School Diploma, accredited by the Western Association of Schools and Colleges (WASC).

## Interested to find out more?

Scan this QR code to find answers to frequently asked questions about the IB DP.





# High School Diploma

Students who meet the graduation requirements will receive an XWA High School Diploma, accredited by the Western Association of Schools and Colleges (WASC). High School Diploma students have a great deal of flexibility when deciding on their selection of courses. They can also select fewer subjects at a higher level than the three demanded by the DP. In addition, they have an opportunity to choose courses of study that specialise in particular areas of interest.

High School Diploma students begin accumulating credits in Grade 9 and continue until the end of Grade 12. A minimum of 21 credits and meeting specific criteria are required to gain the High School Diploma.

## Grading

- One credit is awarded for every full year course passed in Grades 9-12;
- Achieve a minimum Level 1 for their Semester grade;
- Credit is awarded per Semester at a rate of 0.5 credits per subject per Semester;
- The maximum transfer credit that may be awarded is equal to 4 credits per Semester.

## Credit requirements

Subject Area	Minimum for a XCL World Academy High School Diploma <sup>1</sup>	Recommended for many US Universities
English	4	4
World Language	2	4
Individuals and Society	2	4
Sciences	2	4
Mathematics	2	4
Electives (other courses)	9	6
Total	21	26

## Additional graduation requirements

- Fulfil the CAS requirements in Grades 11-12;
- Students must maintain greater than 90% attendance to earn credit in a class and remain on track to graduate.









The background of the entire page is a photograph of two young women. The woman on the left has dark hair and is wearing a black blazer over a dark top with red polka dots. The woman on the right has long brown hair and is wearing a light blue school uniform sweater with a red 'XCL' logo. They are both looking at a laptop held by the woman on the right. The laptop has a dark green cover with 'World Academy' and an Apple logo. In the background, several university pennants are hanging on a wall, including one for 'YALE' and another for 'Stanford' (St).

# University & Career GUIDANCE Programme

Preparing students to think about their future today

Did you know?

OUTSTANDING IB RESULTS

\*2022 IB results

45

HIGHEST  
SCORE

100%

PASS  
RATE

36

AVERAGE  
POINT SCORE

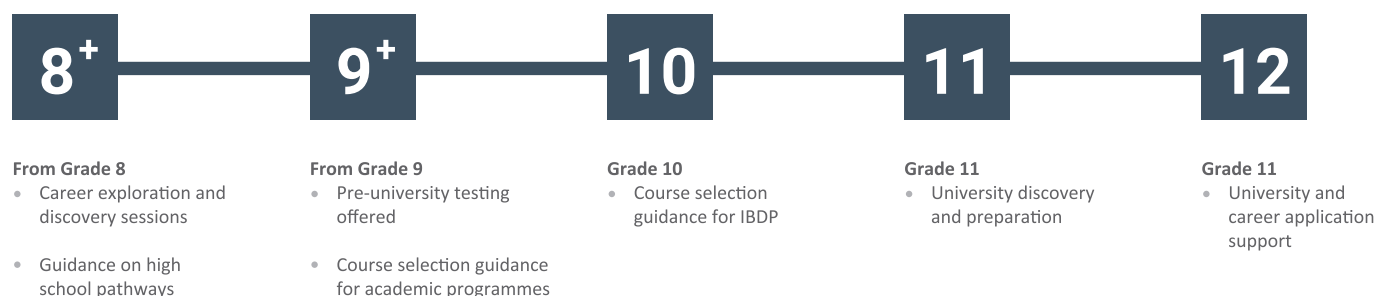
27.3%

OF OUR GRADUATES  
RECEIVED A BILINGUAL  
IB DIPLOMA

**Our University & Careers Guidance is designed to support students to make informed decisions about the educational and career pathways that fit with their specific academic, personal and career aspirations.**

## Personalised university plan and guidance

We prioritise individual attention to all of our students, recognising that each student and family will have different needs, understandings and choices post-high school.



## Unlimited global opportunities

The IB DP is recognised and highly respected by the world's leading universities. Furthermore, evidence suggests that higher rates of DP students go on to university and higher education study than non-IB students.

As an IB World School with a highly diverse student population, our future graduates have their sights set on a wide range of different university and college options, including some of the world's most prestigious tertiary learning institutions.

## Career exploration and discovery programme and XCL Dialogues

Students need to experience and learn about what's out there before making their subject choices. We invite professionals and leaders from all industries and walks of life to share their stories and lessons.

## Career and university mentor network

Students thrive when they have mentors or people older than them (in addition to their parents) to offer advice and learn from. Our alumni, parent and professional mentor network keeps students engaged and helps relieve anxiety knowing others have been there before.

## Pre-university testing and preparation

We offer all pre-university testing necessary for admission to the USA (PSAT 8/9, PSAT NMSQT G10/11, SAT test centre) and advise on additional testing necessary. For students exploring other countries with specific subject testing, we also offer recommended test support providers.

## "College convos over coffee" parent engagement sessions

For all parents (not just high school!), we offer group Q&A sessions in an informal setting so that parents can get all their questions answered about university and high school pathways. We aim to proactively provide the information parents need to make future decisions for their children.

## Dedicated University & Careers Counselling Suite

From the Academic Year 2023-2024, students will have access to a new dedicated Counselling Suite located adjacent to the new IB Diploma Lounge, allowing regular drop-in opportunities and plentiful resources to allow students to study and plan their next steps.



# The School of the **FUTURE**

— Inspiring tomorrow's innovators, leaders and entrepreneurs —



Our world is evolving more rapidly than the capacity of any existing education system. The challenge of learning is becoming progressively harder.

At XWA, we recognise that school is no longer just rows of students in desks with a teacher lecturing beside a chalkboard. The world our students are entering is a diverse, complex and exciting place to be. With the advent of the smartphone giving access to a constant stream of information and connectivity, young people need more than just content knowledge from the traditional disciplines. Our young learners need to acquire the skills and dispositions that will enable them to navigate and apply knowledge to the world around them.

The school provides students with the opportunity to develop and practice innovative thinking through collaborative projects both in and out of classroom settings. We understand that not every student will become an app designer, business owner or robotics engineer. Still, all students will be provided with numerous opportunities to develop strong creative, collaborative dispositions, curiosity, agility, resilience, problem-solving and analytical skills. These opportunities are integrated into our daily curriculum through various school activities and multiple student-led school initiatives.

Our educational programme is always in a state of evolution, adapting to student needs and changes in a complex workforce and ultimately providing the best opportunities for students to be prepared for success in school and beyond.

## Unlock your child's inventive potential

We believe that innovation and creativity are fundamental to all subjects and that design is the link between innovation and creativity. In the Secondary Years, we aim to develop creative thinking to enable students to apply their imagination. At the same time, they enquire, generate ideas, explore, experiment and solve problems through a human-centred 'design thinking' approach, which relies on the human ability to be intuitive, inventive, solve complex problems and find desirable solutions. This process involves observation, discovery, framing the opportunity and scope of innovation, generating creative ideas, testing and refining solutions.

## Interdisciplinary learning

We want your child to be able to solve real-world problems by applying a more comprehensive and creative way of thinking. To achieve this, our students learn to explore subjects in a more integrated fashion, developing a robust understanding of each subject and the relationship between each subject, and use design thinking methods to unleash creativity and explore innovative solutions.

This interdisciplinary approach to education allows our students to hone their analytical thinking skills while simultaneously providing them with the resources needed to develop creative reasoning. Not only will your child learn the 'traditional' skills they need to thrive in their careers, but they will also enjoy learning and finding creative solutions for pressing real-world problems.

## Inspiring learning environment

We offer leading-edge facilities with a wealth of design and technology resources to provide your child with the inventive flair needed to become tomorrow's innovators and entrepreneurs.

*One of the best things about my school is that it allows students to focus on academics, sports, arts and technology, because it provides opportunities for holistic education. For example, over the last month, I found myself in the Design Lab every day, using the 3D printer and laser cutter to develop the house model for my Personal Project. Additionally, for the last two months, I have participated in rehearsals for the annual school production, guided by our amazing Director of Performing Arts. Lastly, another great facility at school, the Garage, makes me eager to learn about the industry of esports and team management. When I am at XWA, I feel empowered and inspired to push myself beyond my limits.*

Spiros Kolokotsas, Grade 10  
(August 2021)



# Developing Internationally **MINDED** Learners

————— Making the world a better place —————

**At XWA, we create unique opportunities for our students to participate in community service projects to develop active, internationally-minded, compassionate young people who want to make a difference in the world and evolve as global citizens. We aim to inspire contribution to society in a sustainable fashion throughout life by developing a service ethos, entrepreneurial activities and community spirit.**

## Experiential Learning Programme

The Experiential Learning Programme (ELP) supports and enhances teaching and learning experiences to engage students in real-world issues and learn through experience and reflection. The programme supports learning throughout the curriculum and also provides specific opportunities within the academic year for students to engage in experiential learning activities, connecting the curriculum beyond the classroom in various contexts. Students engage in team-building activities, familiarisation with the IB programme, investigative challenges and cultural exchanges based within the school and around Singapore. Highly effective student learning does not exist within subject-specific silos. The school will bind learning through the written classroom curriculum, real-world learning activities, various field trips, Service as Action and Creativity, Activity, Service (CAS).

## Secondary Years Week Without Walls

The Week Without Walls is experiential education at its prime. The programme is offered to secondary years students to engage in service-learning and cultural exchanges, become involved in community-based projects, develop interpersonal skills, investigate curriculum links, and explore aspects of the IB Learner Profile. Students will engage in sustainable service and gain awareness of issues that transcend national borders. Students will often plan and work as teams, strengthening their teamwork for a common goal of the greater good.

## Empowering students to take action with confidence

Service as Action is a vital component of our secondary years academic programme. It helps students connect what is learned in school with the real world and develop lifelong skills such as communication, collaboration, understanding and reflection. It also facilitates learning by encouraging your child to step out of their comfort zone and immerse themselves in challenging situations. Service projects will change your child in profound ways and foster individual growth. This can happen in school, at the local food bank or at a distant destination. Through community service, your child has a chance to leave a mark on the global and local community.

## Enhancing personal and interpersonal development

Creativity, Activity, Service (CAS) is at the heart of the Diploma Programme, involving students in a range of activities alongside their academic studies. Students will be involved in a range of activities beyond the academic classroom and encouraged to develop their projects to demonstrate initiative, perseverance, a challenge, and develop skills such as collaboration, problem-solving and decision-making. These may include visual and performing arts, sports, film, health, community service and many others.

## Local and global impact

Our students are offered a great mix of cultural exposure, physical challenges, community engagement and Service as Action opportunities in Singapore and abroad. Our students have travelled to Vietnam, Thailand, Laos and Cambodia. They have worked alongside the local community on a range of activities such as visiting local schools, helping students with their day-to-day activities or teaching them English and games. During the global pandemic, our students have been highly engaged in various projects across Singapore. Examples include monthly visits to an elderly home, fundraisers for underprivileged communities in Singapore, groceries donation to a local neighbourhood FoodBank and foreign worker dormitories, and many others. These initiatives result in memorable experiences that help students understand their shared guardianship of our planet and responsibility toward others.





# SPORTS

## & Physical Education Programme

———— Inspiring healthy minds, bodies and character ————

Sports at XWA is a core element in our balanced curriculum. We encourage all students to develop into confident, critically-thinking, healthy young individuals, whatever their ability. With a focus on health, wellbeing and athletic excellence, we offer a range of sporting opportunities to develop sporting interests that will last a lifetime.

MORE THAN

**45**  
**ECAS**

ON OFFER PER  
SEASON

**50m**

OLYMPIC SIZE  
SWIMMING POOL

**OUTSTANDING**  
FOOTBALL AND  
RUGBY PITCH

HEATED SWIMMING POOL  
FOR YOUNG LEARNERS

**Did you know?**

We provide a sporting learning environment that encourages students to push themselves to new heights. We create opportunities to participate at all levels, allowing students to develop their skills and knowledge and aim for even higher performance targets. Our students have a minimum of two PE lessons per week and a great variety of extra-curricular sports activities to take part in, either competitively or just for enjoyment. A wide range of clubs is also available for students for all skills levels.

We provide students with opportunities to develop the fundamental characteristics of respect, passion, commitment, excellence, leadership, ambition, resilience, teamwork and success.

## Sports teams

Students have the opportunity to represent the school in competitive sports teams throughout the academic year in the Athletic Conference of Singapore International Schools (ACSIS) league. Students can take part or compete in a wide variety of competitive sports in multiple age and gender categories – including football, basketball, cross-country running, rugby, track & field, netball and swimming.

The school's extensive grounds provide outstanding facilities for sporting pursuits, including a 50-meter Olympic-sized swimming pool, all-weather outdoor football and rugby pitch, a large sports hall, a 15-metre high rock-climbing wall, two basketball courts, weights room, an indoor cycling space, multipurpose space, and a heated young learners' swimming pool.

## Our competitive team sports

- Rugby 7s;
- Football;
- Basketball;
- Netball;
- Badminton;
- Touch Rugby;
- Swimming;
- Cross Country;
- Track & Field.



## Competitive swimming

Competitive swimming is vibrant at XWA. A thriving team is training all year round to compete with the best international schools in Singapore.

XWA Competitive Swim Team is composed of 50 swimmers ranging from ages 7-17. Students have an excellent opportunity to develop necessary technical skills, improve their technical skills, and represent their school during competitions.

A-50 metre Olympic-sized swimming pool enables students to train up to 8 times a week and offers the opportunity to host competitive swim meets.



# ARTS

## Programme

### Unlocking creative potential

**The Arts thrive at XWA. Guided by a talented and creative faculty of experienced teachers, our students are taught foundational skills in Visual Art, Theatre and Music while also being challenged to explore and express their own artistic vision.**

The programme stimulates young imaginations and provides students with a wealth of skills that are transferable to other subjects and their lives beyond school.

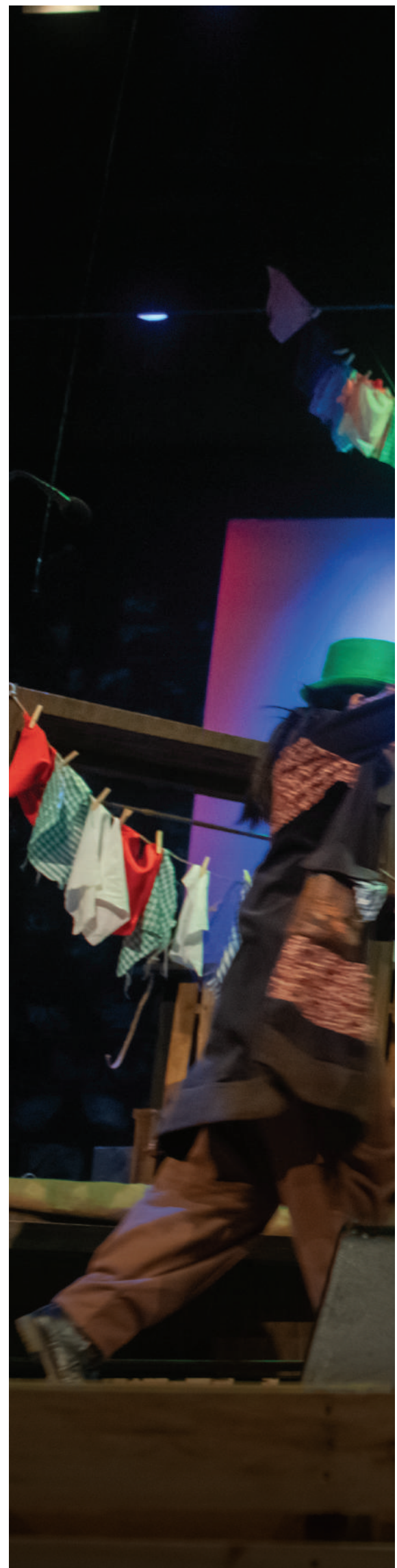
The Arts Programme starts in the Nursery Years with a fully immersive approach and runs through the Primary and Secondary Years Programme. Students have opportunities to exhibit and develop their collaboration and performance techniques within small and large group settings.

While we believe it is essential for students to complete study across the three Arts subjects, and aim to ensure that our students develop strong foundations in Visual Arts, Music and Theatre by increasing the amount of time spent on each Arts subject.

In Grades 6, 7 and 8, the Arts subjects are offered on an elective rotation basis. Students study two different Arts subjects per year (one subject per semester). Each semester, they have an opportunity to explore different Arts subjects, build a strong foundation in their preferred art medium, and develop their creative and analytical skills.

From Grade 9 onwards, the Arts subjects are offered as elective courses. Students will specialise in one Arts subject for the whole duration of their studies in Grades 9 and 10, based on their personal strengths and interests. The programme is designed to prepare students for overall success at the Diploma level through using concepts and contexts, developing creativity, subject-specific skills and ATL skills.

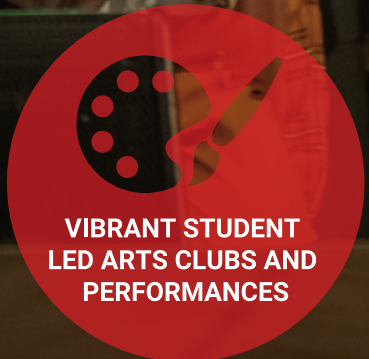
Our inspiring arts facilities include a 750-seat grand auditorium, a fully equipped drama room, spectacular visual art rooms, and a comprehensive suite of music and practice rooms, allowing students to create, compose and record their work.







Did you know?





# Visual Arts

**Visual Arts is a powerful mode of communication through which your child will explore and construct a sense of self and develop an understanding of the world around them. Students will be stimulated to think and articulate their thoughts in new ways and through a variety of media and technologies.**

The Visual Arts programme is a study of art media, techniques, artists, art history and art appreciation and related practices and theories.

## Nursery and Early Years Programmes

Our specially designed Nursery and Early Years Arts programme will enable your child to explore their ideas, feelings and the world around them through a variety of media and materials. Through our hands-on, child-centred approach to teaching and learning, they will begin to develop fine motor skills through art activities involving mark making and painting and take part in sensory experiences involving sand, water and play dough.

## Primary Years Programme

Through our Primary Years Visual Arts programme, your child will be introduced to a broad range of learning experiences where they will learn new skills, develop artistically, make connections and apply their conceptual understandings to invent and create. This artistic journey will allow your child to communicate meaning in distinct forms, develop technical skills, take creative risks, solve problems and visualise consequences. Our young artists' works of art are regularly displayed around the school, and students are encouraged to set up their individual displays throughout the year.

## Middle Years Programme

The Middle Years Visual Arts programme stimulates your child's creative reasoning skills. It encourages them to understand the context and cultural background of artworks and techniques, supporting the development of an inquiring and empathetic worldview. Your child will develop their artistic abilities through creating art in ways that engage and convey feelings, experiences and ideas.

Students will make authentic connections, draw from real-life experiences and broaden their understanding through interactive and practical sessions.

## Diploma Programme

The DP Visual Arts is an open-ended and thought-provoking course in which your child develops analytical, problem-solving and divergent thinking skills while working towards technical proficiency and confidence as an art-maker. In addition to exploring and comparing visual arts from different perspectives and in different contexts, your child will engage in, experiment with and critically reflect on a wide range of contemporary practices and media.

Each year, our DP Visual Arts students have a unique opportunity to showcase their artwork in a public setting and connect with young talented artists from other international schools during the annual IN Exhibition, organised by the Australian High Commission.

## Additional Visual Arts Opportunities

Outside the Visual Arts classroom, your child may choose to join the Art Club, which offers various activities from drawing and creating abstract art to painting murals around the school and designing props for the school production/musical.

We also offer various arts activities led by professional instructors from external providers to further enrich your child's education.







# Music

**Music empowers students to explore and excel in their creative abilities and communicate in ways that go beyond their oral language abilities. Students will develop a lifelong appreciation of Music and an enthusiasm for learning, all in a nurturing environment with supportive teachers.**

Our Music programme includes classifying and analysing sounds, composing, exploring body music, reading music, learning and playing instruments, singing, songwriting, performing and recording creations.

We have found that making Music education relevant to students themselves means they demonstrate a deeper understanding of Music, and we see an intrinsic motivation for learning. We start by offering musical activities that students enjoy, ranging from karaoke, rock bands and electronic music production and then lead them into ensembles and musical performances. In addition, our practice rooms are open to students during lunchtime and after school, where they can create music and practice.

## Nursery and Early Years Programme

Musical experiences begin at the age of two. Our young learners focus on developing their voices as musical instruments. They sing songs and play games as a group, learning how to express themselves in different ways. In the Early Years, they continue to explore Music through instruments such as percussion, tambourines, bells, claves and rhythm sticks while also engaging their bodies. Music is also woven into the programme of inquiry. Through songs and rhymes, children will learn to distinguish patterns and develop a sense of the rhythm that applies not just to Music but to learning Languages and Mathematics.

## Primary Years Programme

In our Primary Years Music programme, children create and respond, exploring the rudiments of musical performance and theory in an inspiring, stimulating, and challenging environment. In addition to singing, dancing and movement, they will explore a variety of instruments ranging from ukuleles to steel drums and xylophones. Music is an active and reflective process when making and listening to it. Students will draw on a wide range of sources in their music learning, such as Music composed by themselves and other students, Music composed by musicians, literature, paintings, dance, imagination, real-life experiences, feelings, values and beliefs. Music is mostly partially or fully integrated into the PYP Programme of Inquiry through various units for deeper connection and exploration.

## Middle Years Programme

In Music, students will create, perform and analyse Music in a variety of genres. They are encouraged and expected to draw on their musical knowledge to inform their artistic decision-making and develop their abilities to the fullest. They will make authentic connections, draw from real-life experiences and broaden their understanding through interactive and practical sessions.

Your child will become familiar with the diversity of musical traditions and techniques across the globe and be inspired to create, experiment and perform. They will be encouraged to study an individual instrument or voice and participate in the many musical ensembles performing regularly in school.

## Diploma Programme

DP Music involves aspects of the composition, performance and critical analysis of Music. The programme exposes students to music forms, styles and functions from various historical and socio-cultural contexts. Students create, participate in and reflect upon Music from their own backgrounds and those of others. They will develop practical and communication skills that allow them to engage in Music for further study and lifetime enjoyment.

## Additional Music Opportunities

Outside the Music classroom, students may choose to participate in a choir and rock bands, talent shows and open mic sessions.

We also offer various activities led by professional instructors from external providers to further enrich your child's education. These include private piano, violin, guitar and drum kit lessons.







# Theatre

**Theatre has the unique ability to help students develop confidence, public speaking skills and unlock their full potential, which significantly impacts all aspects of their lives.**

Our Theatre programme hones your child's basic performing arts and creative dramatics skills. Students learn how to refine their communication and performance skills, gain a deeper understanding of theatre's history and practice, and investigate how Theatre can be used as a catalyst for social change and reflection.

Our students have opportunities to showcase their learning and perform during class, in assemblies, open mic sessions and talent shows. Your child will also have the opportunity to participate in drama workshops led by in-house professional instructors from the International School Theatre Association (ISTA) and participate in the ISTA Festivals around Singapore. These events provide experiences that develop creative learning and internationalism through theatre, with changing themes each year to offer unique experiences at each and every one.

Through our Theatre programme, we witness the growth and development of our students, from their confidence level and public speaking skills to their ability to express themselves, which serve as key elements to unlocking their full potential.

## Nursery, Early and Primary Years Programme

Specially designed drama activities are woven into the Nursery, Early Years and Primary Years Programme of inquiry, developing your child's communication and collaboration skills through the exciting medium of drama tools such as puppetry, games, role-play, improvisation, reading aloud, movement and dancing. Your child will have the confidence to express themselves, not just through words, but also through facial expressions and body language.

## Middle Years Programme

Our Theatre programme is designed to be open-ended and challenging, focusing on learning and developing skills and knowledge in the arts. Students will work in groups and individually, creating original performances using devising techniques to produce a fully realised piece. They will also be cast and tasked with presenting scripted pieces from published plays.

## Diploma Programme

The DP Theatre course is a multifaceted theatre-making course of study that emphasises the importance of working both individually and collaboratively as part of an ensemble. It gives students the opportunity, as creators, designers, directors and performers, to engage actively in the creative process, transforming ideas into action as inquisitive and productive artists. Through researching, creating, preparing, presenting and critically reflecting on theatre - as participants and audience members, your child will gain a richer understanding of themselves, their community and the world.

## Additional Drama/Theatre Opportunities

Your child also has the choice to join various extra-curricular activities featuring drama or join clubs such as Stars on Stage, Drama Club, XWA Voices, XWA Dance Crew and audition for a role in one of our school productions.

We also offer various activities led by professional instructors from external providers to further enrich your child's education.



# LANGUAGE

## Programme

Developing the skills to become an internationally-minded global citizen



Did you know?

WE OFFER

FRENCH

SPANISH

MANDARIN

EAL  
SUPPORT


AS PART OF OUR MODERN  
LANGUAGE PROGRAMME

TO STUDENTS WHOSE  
FIRST LANGUAGE  
IS NOT ENGLISH

HOME LANGUAGE  
LESSONS  
(JAPANESE, KOREAN,  
MANDARIN, SPANISH,  
FRENCH)

ENGLISH - CHINESE  
(MANDARIN)  
BILINGUAL PROGRAMME  
OPTION  
(PRE-K - G2)

En Cn



At XWA, our language offerings are designed to meet the needs of our diverse school community. Our Language programme focuses on four key components:

## English language for academics

English is the language of instruction at the school and forms the core language across all courses. In our Early Years and Primary Years language programmes, your child will develop strong reading, comprehension and writing skills. In the Secondary Years, Language and Literature classes focus on the continuous enhancement of formal English language skills and the critical thinking ability needed in exploring and analysing a variety of text types.

## Modern language programme

Learning modern languages is a core component of being an international student. Nursery and Early Years students will have daily Mandarin lessons. Young learners will be introduced to basic Chinese character strokes and learn the language in a fun and engaging learning environment. From Grade 1 onwards, students can continue Mandarin or choose to learn Spanish or French language. In addition to the above languages, DP students have the opportunity to undertake Language A Japanese Language & Literature in Grades 11-12.

## English-Chinese (Mandarin) Bilingual Programme

Our unique English-Chinese (Mandarin) Bilingual Programme is designed for Pre-K to Grade 2<sup>3</sup> students and allows non-native Mandarin speakers to have a rigorous introduction to Mandarin during their foundation years. Over time, we plan to offer this programme to more grade levels.

## English as an Additional Language

For students whose first language is not English, we have recently enhanced our English as an Additional Language Programme (EAL) to make it even more robust, comprehensive and personalised. The enhanced EAL offering ensures all children have the necessary English language skills to have full access to the curriculum and programmes available.

## Home Language Programme

The Home Language Programme aims to support our students in maintaining and further developing their linguistic skills and providing them an opportunity to stay connected with their culture and heritage. We offer Home Language Programme for students from KG2 to Grade 5, using two approaches:

- After-school programme (Japanese, Korean, Mandarin, French and Spanish);
- Within the school day programme (Japanese).

<sup>3</sup> XWA is planning to expand this programme every year. Speak with our Admissions Team to learn more.



# EARLY & PRIMARY YEARS BILINGUAL PROGRAMME

XWA is proud to offer a unique English - Chinese (Mandarin) Bilingual Programme for Pre-K to Grade 2<sup>4</sup> students. Over time, we plan to offer this programme to more grade levels. This programme is designed to allow native and non-native Mandarin speakers to have a rigorous introduction to Mandarin during their foundation years and provides students with the opportunity to acquire the skills for speaking, reading, writing, listening and communicating in English and Mandarin.

Our bilingual programme strives to provide equal emphasis on Mandarin and English, while remaining adaptable to cater to the individual needs and readiness of each student. The model is based on the translanguaging model and differs from other bilingual programmes where both languages are used in isolation.

## Key objectives



TO LEARN A VARIETY OF  
SUBJECTS AND SKILLS IN  
BOTH LANGUAGES



TO PARTICIPATE IN ENGAGING  
AND CREATIVE ACTIVITIES  
AND DISCUSSIONS



TO PROVIDE A SOLID  
FOUNDATION FOR  
HIGHER GRADES

The Early Years learning experiences are aligned with the IB PYP curriculum framework followed by other Early Years students. Students are encouraged to be curious, creative, collaborative, kind and considerate. They learn by connecting prior and new knowledge in meaningful ways in both English and Mandarin.

As with all Early Years classes, there are two qualified teachers per class. In the Bilingual Programme, both are proficient in English and Mandarin. Small classes and low student-to-teacher ratios are set to ensure adequate attention for each student and that no child is left behind.



DESIGNED FOR NATIVE  
AND NON-NATIVE  
MANDARIN SPEAKERS



INCREASED CREATIVITY  
AND ADVANCED  
PROBLEM-SOLVING  
SKILLS HAVE BEEN LINKED  
TO BILINGUALISM



OPPORTUNITY TO  
LEARN EQUALLY IN  
MANDARIN AND  
ENGLISH



TWO QUALIFIED  
TEACHERS PER CLASS,  
BOTH PROFICIENT IN  
ENGLISH AND  
MANDARIN

# HOME LANGUAGE PROGRAMME

At XWA, we believe that a diverse and inclusive language programme is essential to the success of all learners. As an IB continuum school, we value the wide variety of home languages represented in our cohort, the ongoing development of the English language and the opportunity to help our students learn new languages.

The Home Language Programme aims to support our students in maintaining and further developing their linguistic skills and providing them an opportunity to stay connected with their culture and heritage. We offer Home Language courses using two approaches:

## After-school programme

XWA offers Japanese, Mandarin, French and Spanish Home Language classes as an after school programme for students in KG2 through to Grade 5. While there is an articulated course of study for each class, the programme does not aim to follow nor prepare students for a national education system qualification.

The Home Language students are levelled by capability and/or age and placed into one of two 1-hour classes from 3:45 pm to 4:45 pm. Although these classes take place during the ECAs, they are considered formal lessons. A year-long commitment is required for all students joining the programme. The attendance will be marked, and report cards will be issued.

## Within the school day programme

Students may also choose to study their home language<sup>5</sup> as a timetabled lesson during the school day twice a week. This is in place of two other curriculum homeroom lessons and/or a lunch break (to be decided by the class teachers).

<sup>5</sup> For AY 2022-2023, only Japanese language will be offered as part of the Home Language Programme within the school day.



# Supporting Students in Learning **ENGLISH** as an Additional Language

————— Open to a culturally diverse community of learners —————

**Our student body comprises over 50 different nationalities, and the language profiles of some of our learners are rich and complex, requiring individualised support to cope with the English-based curriculum. Our English as an Additional Language (EAL) Programme supports students with limited English language skills to develop both written and spoken English capabilities so that they can make the most of their time here at XWA.**

If your child requires additional language support, they will be assessed during the admissions process to ascertain their current level of English. Students studying at Grades 11-12 must have fluent English language skills – both spoken and written.

## Enhanced EAL Programme (Grades 1-8)

The Enhanced EAL Programme<sup>6</sup> is designed to support learners who have had limited exposure to the English language. In collaboration with class teachers, EAL teachers will support students through small group ‘pull-out’ classes and ‘push-in’ support. While some students would be learning Mandarin, Spanish or French, EAL students would be attending English Language Acquisition classes. EAL students will receive focused instruction in the areas of grammar, vocabulary and language development across listening, speaking, writing and reading skills. The number of ‘pull-out’ and ‘push-in’ sessions varies depending on the level of EAL support, timetabling, and student’s needs.

### EAL Pull-out classes

During ‘pull-out’ classes, students will receive intensive and tailored English language instruction within a small group setting outside of the main classroom. It is important to note that students may be pulled-out from different subjects based on the linguistic difficulty of the subject. The EAL teacher will collaborate with the respective classroom teacher at all times to accommodate each student’s individual language needs within the context of each class unit. The small-group setting will provide a safe learning environment for students to practice speaking skills, ask questions and receive personalised instruction.

### EAL Push-in classes

Students will learn alongside their peers during ‘push-in’ classes and receive in-class support from the EAL teacher. In collaboration with the class/subject teacher, the EAL teacher will assist in the context of the content studied in the homeroom environment. This will ensure that students remain integrated into the core curriculum and with their peers, promoting social communication skills and inclusion in all aspects of school life.

## Standard EAL Programme (Grades 9-10)

The Standard EAL Programme<sup>7</sup> is designed to provide students with the necessary support and improve their English language skills across the curriculum, promoting overall success at school. The programme is focused on strengthening students’ academic vocabulary, speaking, listening, reading comprehension and writing skills. The number of classes and hours may vary due to the timetabling of subjects.

<sup>6</sup> Enhanced EAL programme for students in Grades 1 - 8 is not included in the tuition fees and will be charged separately.

<sup>7</sup> Standard EAL Programme is included in the tuition fees.





Diverse

PROGRAMME

of Extracurricular Activities

Developing a well-balanced lifestyle

We believe that all our students should be given every chance to discover subjects and activities that genuinely appeal to them and then be allowed to pursue those passions in a supportive learning environment.

Extracurricular activities

XWA provides diverse extracurricular activities (ECAs) in academics, sports and the arts throughout the year for students from Kindergarten to Grade 12. Our goal is to have a balanced ECA programme that allows students to develop their character, acquire new skills and discover new passions. These ECAs are run by our excellent faculty members and provided free of charge.

Grade Level	Type of activities	Grade Level	Type of activities
Early/ Primary Years	<ul style="list-style-type: none"><li>Art Club;</li><li>Basketball;</li><li>Chess Club;</li><li>Dance;</li><li>Robotics;</li><li>Coding;</li><li>Football Skills;</li><li>Learn to Swim;</li><li>Lego;</li><li>Puzzle Games;</li><li>Primary Years Drama;</li><li>Sport Skills;</li><li>STEM;</li><li>Zumba;</li><li>Chinese Home Language;</li><li>Japanese Home Language.</li></ul>	Secondary Years	<ul style="list-style-type: none"><li>3D Design SketchUP;</li><li>Art Smart;</li><li>Basketball;</li><li>Chess Club;</li><li>Dance Club;</li><li>Debate Club;</li><li>Environmental Action Council;</li><li>Football;</li><li>XWA Strings;</li><li>XWA Voices;</li><li>Maker Space;</li><li>Mock United Nations;</li><li>Robotics;</li><li>Rock Band;</li><li>Podcast;</li><li>Student Council;</li><li>Secondary Years Production;</li><li>TED Talk;</li><li>World Scholars;</li><li>Journalism Club;</li><li>EAL Work Hour;</li><li>Touch/ Rugby.</li></ul>

*Note: Not all ECAs listed here will be available throughout the academic year. This is not an exhaustive list and simply provides an indication of typical activities available.*

Enrichment Programme

In addition, we offer various activities as part of our Enrichment Programme at an additional charge. These activities are led by professional instructors from external providers that work under the school's regulations and standards.

<ul style="list-style-type: none"><li>Aviation Club;</li><li>Backpack Filmmaking;</li><li>Ballet Beginning;</li><li>Chalk Wood;</li><li>Coerver Football;</li><li>Drama (Physical Theatre);</li></ul>	<ul style="list-style-type: none"><li>Parkour;</li><li>Cricket;</li><li>Tennis;</li><li>Hip Hop;</li><li>Karate;</li><li>MICROBIT;</li></ul>	<ul style="list-style-type: none"><li>Percussion (Physical Theatre);</li><li>Proform Basketball Skills;</li><li>Rock Climbing;</li><li>Spartans Boxing;</li><li>Yoga;</li><li>XLab Swimming.</li></ul>
---	--	--

*Note: Not all enrichment activities listed here will be available throughout the academic year. This is not an exhaustive list and simply provides an indication of typical activities available.*

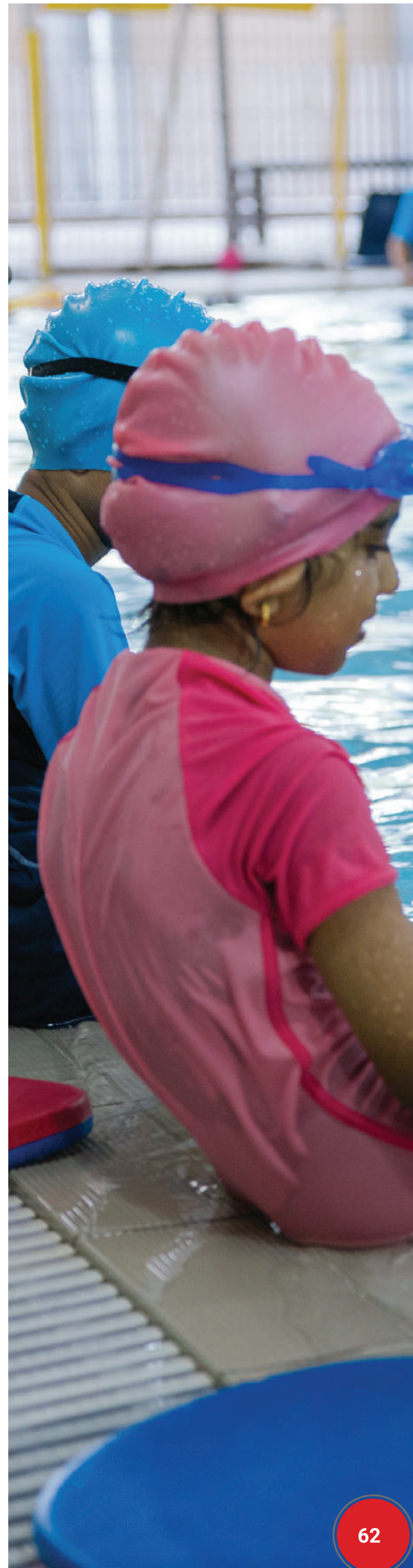
## Encouraging collaboration and healthy competition amongst our students

Our House System encourages and fosters teamwork, participation and sportsmanship in all areas of school life. The house system is designed to strengthen and consolidate our ethos as a whole school by building team relationships and facilitating students' opportunities to lead and represent their houses in competitive and fun activities. The sense of community within each house encourages a feeling of identity and belonging.

### House system

Our House System comprises four Houses and appointed House Leaders selected from the staff and student body (one teacher leader and two student leaders). Their task is to motivate and encourage the students within their respective House and play a full and active part in the inter-House competitions.

We encourage all students to play an active role in the success of their allocated House. We have created many events throughout the school year where students, in their houses, compete and are rewarded at both an individual and team level. Some of these events include; sports day, swimming gala, spelling bees, trivia day, language and culture week competition, and several challenge events during assembly and homeroom time. We have also linked our house system with the IB learner profile. Students who demonstrate any of the ten IB learner profile traits will be issued rewards points that add to the end of year house competition.









# Parent ENGAGEMENT

---

Always there for parents. Always there for children.

---

You, as a parent, are your child's first teacher. You know your child best – how they learn, respond to strategies, and what builds their confidence the most as they strive towards their aspirations. Parent engagement within our community is not only about creating a community but is also important for student learning. Therefore, creating and maintaining a close and collaborative family-oriented school community is one of the highest priorities here at XWA.

## Tight-knit community

Families, teachers and students are the foundation of a strong and supportive community. We encourage an environment that is engaging for both parents and children, as we believe that the more you engage, the more rewarding your experience will be. A key avenue for parent involvement is the Parent Engagement And Connection Committee (PEACC), our parent-run volunteer group.

## Get involved

We encourage our new families to join our Parent Coffee Morning and School Assemblies to meet our supportive community and find new friends.

## Parent Engagement Workshops

For all parents, we offer group Q&A and Parent Engagement Workshops in an informal setting so that parents can get all their questions answered about our curriculum, high school pathways and university selection process. We aim to proactively provide the information parents need to make future decisions for their children.

## Parent Engagement And Connection Committee

The mission of the Parent Engagement And Connection Committee is to foster positive relationships that develop and strengthen community spirit through effective partnerships between the school staff, students and parents. The PEACC works closely with Parent Relations Team, the Educational Leadership team and teaching faculty to foster positive relationships between the school community, advocate for improvements to educational facilities and standards, and contribute to various educational school events.

The PEACC organises the following community and activities:

- Family Fun Day;
- Cultural Day Food Fair;
- Parent Coffee Social Mornings;
- Holiday Bazaar;
- PTC Fundraising Events;
- Charity Volunteer Work;
- Dad's Social Group;
- Mum's Social Group.

## Parent Relations Team

There can be a lot happening for a family relocating to a new country and joining a new school. This is why our Parent Relations Team is here to support our parents. They are always willing to offer advice for settling into Singapore and help to connect with the PEACC.



## Parent Ambassadors

Our wonderful parents and Admissions team are on hand to offer prospective families advice and answer questions covering a diverse range of topics. Chat with them today to help you decide whether XWA is the right school for your family.

**Ask our parents and Admissions team questions on a variety of topics including:**

- Feedback on our teaching and learning;
- How well do we communicate with our parents;
- How can parents volunteer at the school;
- Are our students happy and engaged;
- What are our attitudes towards inclusiveness and diversity;
- General advice on settling into a new school;
- Living in Singapore;
- How to apply.

Let us help you get to know XCL World Academy further by browsing the parent and staff profiles below. Start a chat with our friendly and helpful ambassadors now!









Inspiring  
**LEARNING**  
Environment

—— Impressive facilities designed to fuel holistic development ——







**XWA occupies a beautiful five-hectare campus in the heart of Yishun, just 20 minutes from Singapore City Centre. The campus has a state-of-the-art 750 seat auditorium, visual art and music rooms, contemporary design centre, an eSports facility, Olympic-sized swimming pool, separate heated swimming pool for our youngest learners, all-weather FIFA-approved sports field, 2 basketball courts and 2 libraries containing over 35,000 books.**

In line with the Singapore Economic Development Board's guidance, XWA is committed to expanding our current infrastructure which will further support the educational journey of our students.

The Board has approved the construction of an Innovation Hub to include facilities for Science, Mathematics, eSports and a dedicated preparation suite for IB Diploma students which includes a university and careers counseling section, and a study and recreation lounge. New tennis courts, running track, and batting cages for cricket and baseball are also planned. All new facilities are set to open in August 2023.

## Designed for enhanced well-being, comfort and safety

Everything is designed to enhance student well-being, comfort and safety. Security within the buildings and across the campus has been meticulously planned. From manned gates to a complete perimeter fence, every student and visitor is logged in and out of the campus. We even have 2 fully qualified nurses throughout the school day to handle any emergency that may arise.

## BCA Green Mark Award

The school is committed to maintaining its 'gold' Green Mark status with the Singapore Building & Construction Authority (BCA).





# SUSTAINABILITY

## Initiatives

—— Safeguarding our planet for future generations ——





**A Sustainability Committee has been established at XWA to support the school in addressing the three pillars of sustainability (Governance, Social and Environmental Factors), as well as the 'Five C's of school sustainability' - Campus, Curriculum, Community, Culture and Communication.**

The key objectives of impact and action will form the basis for sustainability initiatives, and will involve important stakeholders - students, parents, teachers, support staff and administrators.

The Sustainability Committee will also ensure that the following specific areas are addressed and considered:

- Aspiration to become a 'green flag' school under the Eco-Schools programme within 3-5 years;
- Supporting the UN Sustainable Development Goals (SDGs);
- Responsible procurement;
- Student-led environmental initiatives linked to the curriculum;
- Participation in the Singapore 'green schools' initiatives Awareness campaigns.





# Our LOCATION

And Transportation

Easy access from any part of Singapore



**Our campus is located in a serene residential neighbourhood, surrounded by lush greenery and nature. Located just 20 minutes away from Singapore City Centre, the school is easily accessible by car, public transport and MRT.**

XWA offers door to door island-wide bus service to all students, including our youngest Nursery learners. For the vast majority of riders, the average journey time will be 45-50 minutes. The school bus service is provided to and from the school with the safety and convenience of our students as a priority. All seats in every bus are fully equipped with safety belts and have bus attendants on board.

In addition, we also provide a complimentary shuttle bus service to and from Yishun MRT station for students and their parents. A few public bus stops are located outside the school, serviced by bus number 103, 117 and 806.





# Our ADMISSIONS Process

5 easy steps

XWA welcomes applications for all grade levels throughout the academic year. However, we encourage you to apply as early as possible due to the limited availability of places.

For Secondary Years in Grade 9 to Grade 11, applications are reviewed on a case-by-case basis, subject to course selection and pathway availability.

## Application

- 1** Submit an online application and upload all required documents<sup>14</sup>.
- 2 Application Fee**  
Pay the Application Fee (non-refundable) to initiate the application review process.
- 3 Application Review**  
Submitted applications will be reviewed by the Enrolments Team and Educational Leadership Team. Some applicants may be invited to sit for an English Language proficiency assessment or attend a Family Meeting with our Educational Leadership Team. Our Admissions Team will take care of all arrangements.

- 4 Offer**  
Successful applicants will receive an official Offer Letter from the Registrar and Enrolment Department. As part of the application process, you will be required to pay an upfront, non-refundable Enrolment fee upon receiving the offer letter. After that, you will receive a Student Contract for your review and acceptance, as well as an invoice for the tuition fees.

- 5 Enrolment**  
Once all documentation is submitted and fees paid, your family is all set to start your learning journey with us. You will receive a Welcome Information Pack and be all set to Shape Next Now!

## Contact us

Our Admissions team will be glad to guide you through the application process and provide you with as much information as possible to enable you to make the best decision for you and your family. If your child requires a Student Pass or an exemption letter from the Ministry of Education (MOE), please contact our Admissions team ahead of the admission date, and we will guide you through the application process.

Tel: (65) 6230 4230 | Email: [admissions@xwa.edu.sg](mailto:admissions@xwa.edu.sg)

<sup>14</sup> All supporting documents must be in English. If any supporting document is not written in English, you must provide a certified translation.



**World  
Academy**



**Facebook:** [facebook.com/xclwa](https://facebook.com/xclwa)



**Linkedin:** [Linkedin.com/company/xclwa](https://linkedin.com/company/xclwa)



**Instagram:** [@xcl\\_wa](https://instagram.com/xcl_wa)



**Twitter:** [@xclwa](https://twitter.com/xclwa)



**Youtube:** [XCLWorldAcademy](https://youtube.com/XCLWorldAcademy)

Visit us at [www.xwa.edu.sg](http://www.xwa.edu.sg)



☎ (65) 6230 4230

✉ [admissions@xwa.edu.sg](mailto:admissions@xwa.edu.sg)

💻 [www.xwa.edu.sg](http://www.xwa.edu.sg)

📍 2 Yishun street 42, S768039

CPE registration number: 200803726H, 19 March 2021 to 18 March 2025. EduTrust certificate number: EDU-2-2082, 27 October 2020 - 26 October 2024

The information provided in the brochure is accurate at the time of printing. XCL World Academy reserves the right to vary any specified information documented in this brochure at any time without prior notice. (V1, 2022).